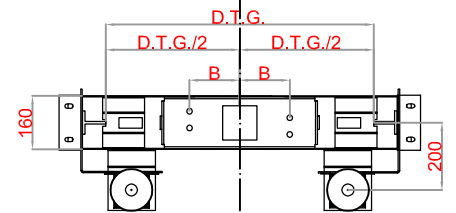
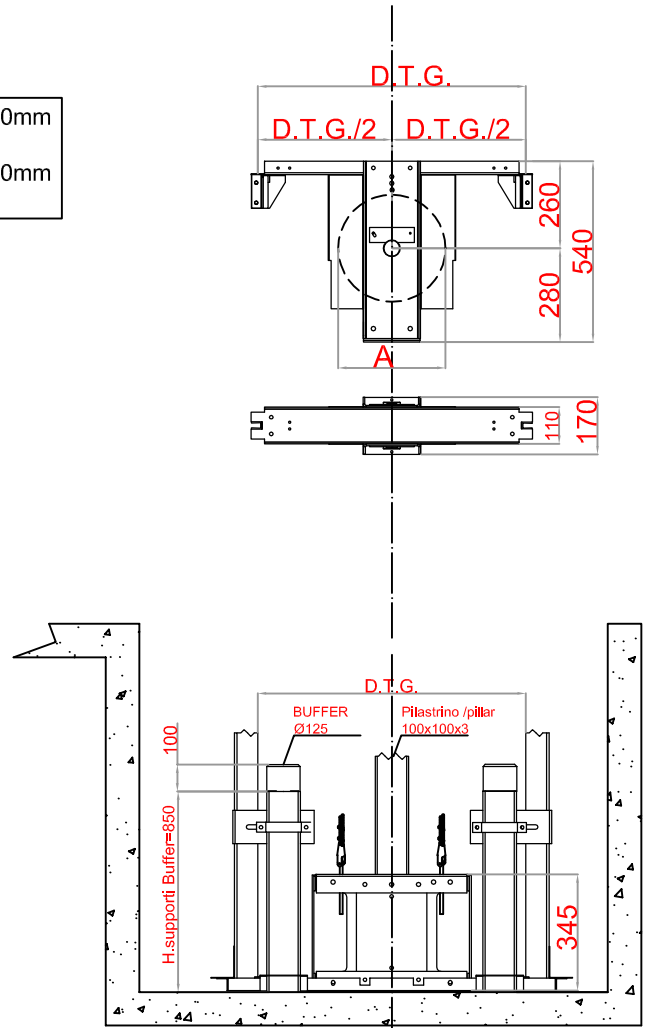
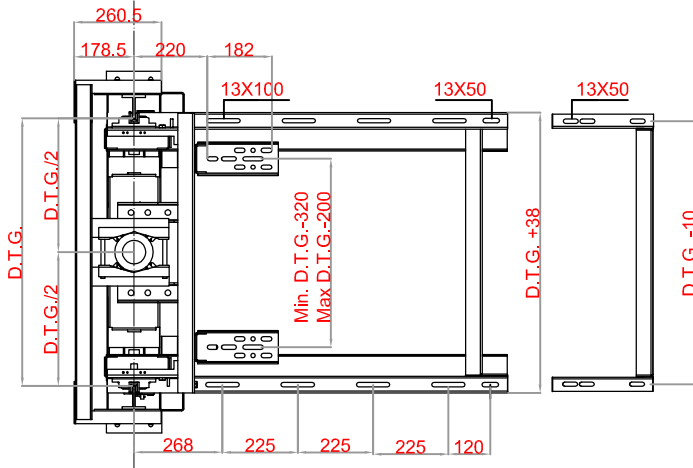
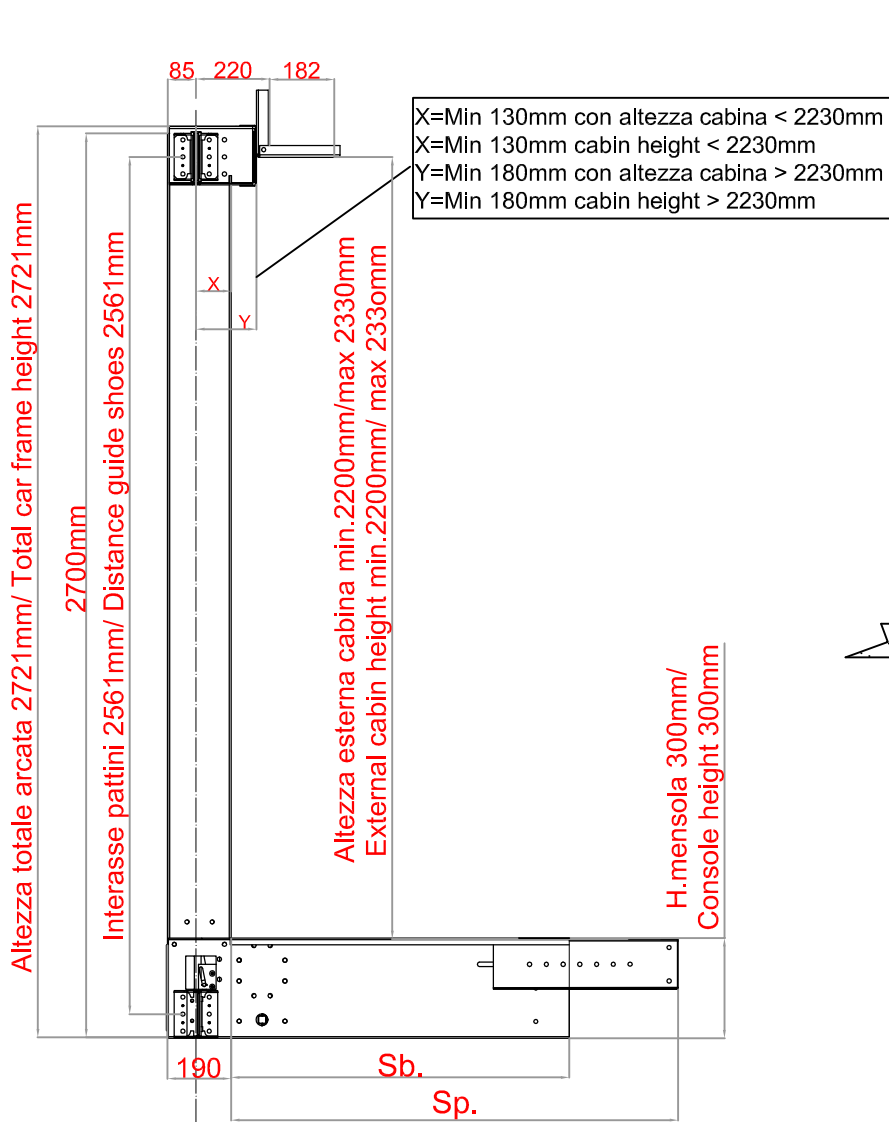


ARCATE IDRAULICHE IN TAGLIA 2:1 HYDRAULIC CAR FRAME SUSPENSION 2:1

TIPO ASC2/ TYPE ASC2



D.I.G.	B
800	150
900	150
1000	180

**ARCATE
CAR FRAME**

ARCATE IDRAULICHE IN TAGLIA 2:1
HYDRAULIC CAR FRAME SUSPENSION 2:1

TIPO ASC2/ TYPE ASC2

CARATTERISTICHE TECNICHE		TIPO ASC.2		
TECHNICAL CHARACTERISTICS				
TIRO MAX* ALL UP LOAD	1200			daN
D.T.G.(distanza tra le guide) D.T.G.(distance between guides)	800	900	1000	mm
Sb. sbalzo mensola std Sb. std console overhanging	1000			mm
Sp. sbalzo mensola con prolunga Sp. overhang with extension	min.1050 max 1300			mm
Ø PULEGGIA (A) Ø PULLEY	360	360	400	mm
Ø FUNI Ø ROPE	9	9	10	mm
N° FUNI NUMBER OF ROPE	4	4	4	
ALTEZZA PILASTRINO PILLAR HEIGHT	std.3000 max 3500			mm
Ø TESTA CILINDRO CYLINDER HEAD DIAMETER	max 200			mm
VELOCITA' IMPIANTO INSTALLATION SPEED	std con paracadute a presa istantanea with instantaneous safety gear			
VELOCITA' IMPIANTO INSTALLATION SPEED	a richiesta/on request con paracadute progressivo with progressive safety gear			
MASSA ARCATA CAR FRAME WEIGHT	132	136	140	Kg
MASSA ARCATINA PULLEY WEIGHT	33	34	37	Kg
GUIDE GUIDES	80x80x9/ 82,5X68,25X9/ 90X75X16			

* Tiro max= P+Q

P= massa complessiva sospesa (massa arcata+ massa cabina+ massa operatori+massa ante cabina)

Q= portata nominale

* All up load= P+Q

P= total suspended weight (car frame weight+ cabin weight+ operator weight+ pannel weight)

Q= useful load

ARCATE
CAR FRAME